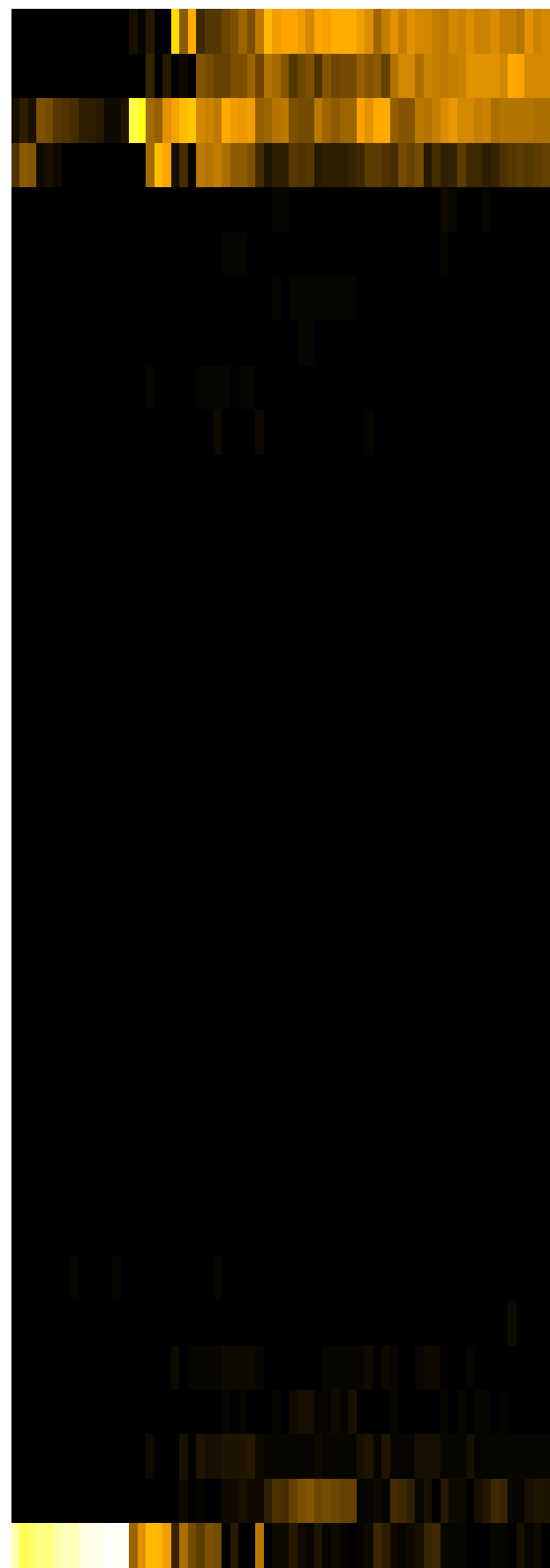
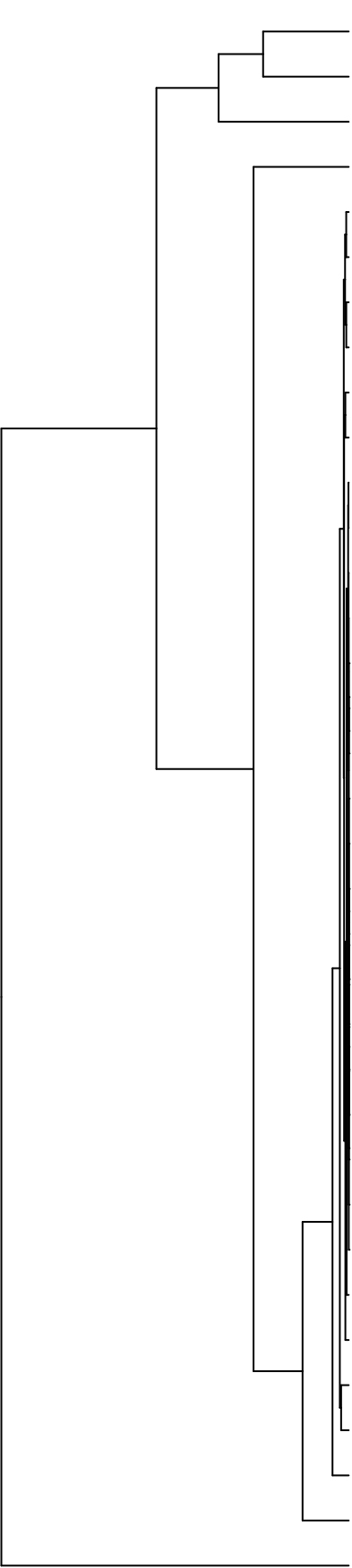


Group006
 B Final -PMA
 A Final -PMA



- Veillonellaceae
- Pasteurellaceae
- Streptococcaceae
- Neisseriaceae
- Prevotellaceae
- Porphyromonadaceae
- Leptotrichiaceae
- Lachnospiraceae
- Gemellaceae
- Micrococcaceae
- Erysipelotrichaceae
- Saccharibacteria_(TM7)_[F-1]
- Atopobiaceae
- Burkholderiaceae
- Propionibacteriaceae
- Moraxellaceae
- Pseudomonadaceae
- Phyllobacteriaceae
- Rhizobiaceae
- Sphingomonadaceae
- Comamonadaceae
- Microbacteriaceae
- Weeksellaceae
- Hymenobacteraceae
- Saccharibacteria_(TM7)_[F-2]
- Mycobacteriaceae
- Flavobacteriaceae
- Absconditabacteria_(SR1)_[F-1]
- Staphylococcaceae
- Yersiniaceae
- Actinomycetaceae
- Campylobacteraceae
- Carnobacteriaceae
- Fusobacteriaceae
- Enterobacteriaceae

- F28914.S566
- F28914.S563
- F28914.S408
- F28914.S561
- F28914.S406
- F28914.S403
- F28914.S405
- F28914.S396
- F28914.S081
- F28914.S567
- F28914.S397
- F28914.S082
- F28914.S083
- F28914.S088
- F28914.S084
- F28914.S398
- F28914.S399
- F28914.S556
- F28914.S554
- F28914.S558
- F28914.S557
- F28914.S246
- F28914.S247
- F28914.S235
- F28914.S241
- F28914.S242
- F28914.S076
- F28914.S078
- F28914.S236
- F28914.S074
- F28914.S238

Family

Samples